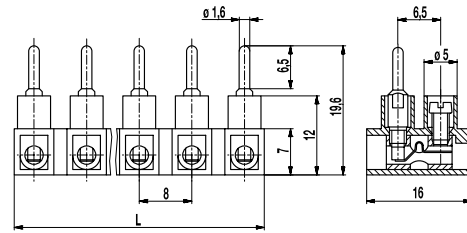


302-NSLW(-HDS)

Plug-in terminal strip

Screw connection & short pin, wire entrance vertical to pin, low profile version



GENERAL INFORMATION

Pitch	8 mm
No. of poles	2 - 12
Usable with	302-NFLW-DS
Areas of application	This plug connector is well suited for applications that require to easily open and close not energised circuits.

TECHNICAL DATA

Clamping Range	<i>solid / stranded / AWG</i>		
without wire protector	0,5 - 4 mm ² / 0,5 - 2,5 mm ² / 20 - 12 AWG		
with wire protector	0,34 - 2,5 mm ² / 0,34 - 2,5 mm ² / 22 - 14 AWG		
Rated Cross Section	1,5 mm ²		
Wire Stripping Length	7 mm ± 0,5 mm		
Overvoltage Category	III	III	II
Pollution Severity Level	3	2	2
Rated Voltage	250 V	320 V	630 V
Rated Impulse Voltage	4 kV	4 kV	4 kV
Rated Insulation Voltage	250 V acc. to EN 60998-1		
Rated Current	6 A		
Torque	0,4 Nm		
Other specifications	Rated values apply to use in combination with 302-NFLW-DS and without insulated substrates.		

APPROVALS

	Current [A]	Voltage [V]	Group	AWG	[Nm]
	10	300	B,D	22 - 14	0,4
	10	300	B,D,E	26 - 12	0,4 [1]

CONFIGURATIONS

Version	Poles	Item	Article number	Item	Article number	Length (L)	PU
Standard	2	302-NSLW/02	12.820.039	302-NSLW-HDS/02	32.820.039	15,00 mm	250
Standard	3	302-NSLW/03	13.820.039	302-NSLW-HDS/03	33.820.039	23,00 mm	250
Standard	4	302-NSLW/04	14.820.039	302-NSLW-HDS/04	34.820.039	31,00 mm	200
Standard	5	302-NSLW/05	15.820.039	302-NSLW-HDS/05	35.820.039	39,00 mm	100
Standard	6	302-NSLW/06	16.820.039	302-NSLW-HDS/06	36.820.039	47,00 mm	80
Standard	7	302-NSLW/07	17.820.039	302-NSLW-HDS/07	37.820.039	55,00 mm	80
Standard	8	302-NSLW/08	18.820.039	302-NSLW-HDS/08	38.820.039	63,00 mm	80
Standard	9	302-NSLW/09	19.820.039	302-NSLW-HDS/09	39.820.039	71,00 mm	60
Standard	10	302-NSLW/10	20.820.039	302-NSLW-HDS/10	40.820.039	79,00 mm	40
Standard	11	302-NSLW/11	21.820.039	302-NSLW-HDS/11	41.820.039	87,00 mm	40
Standard	12	302-NSLW/12	22.820.039	302-NSLW-HDS/12	42.820.039	94,00 mm	40

MATERIAL

Moulding	PA, natural, V-2
Comparative Tracking Index	CTI ≥ 600
Insulating Group	I
Temperature Range	-40°C up to 100°C
Terminal body	Nickel plated brass
Screw	M2,6; zinc plated steel, blue passivated
Wire protector	Stainless steel strip
Plug	Tin plated brass

OPTIONS / ACCESSORIES

- Marking options on the screw guides
- Jumper 302-J

[1] for 302-NSLW-HDS: 26 - 14 AWG

